



GMT MONTHLY MEMBERSHIP PROGRESS REPORT

Results as of: 6/30/2020

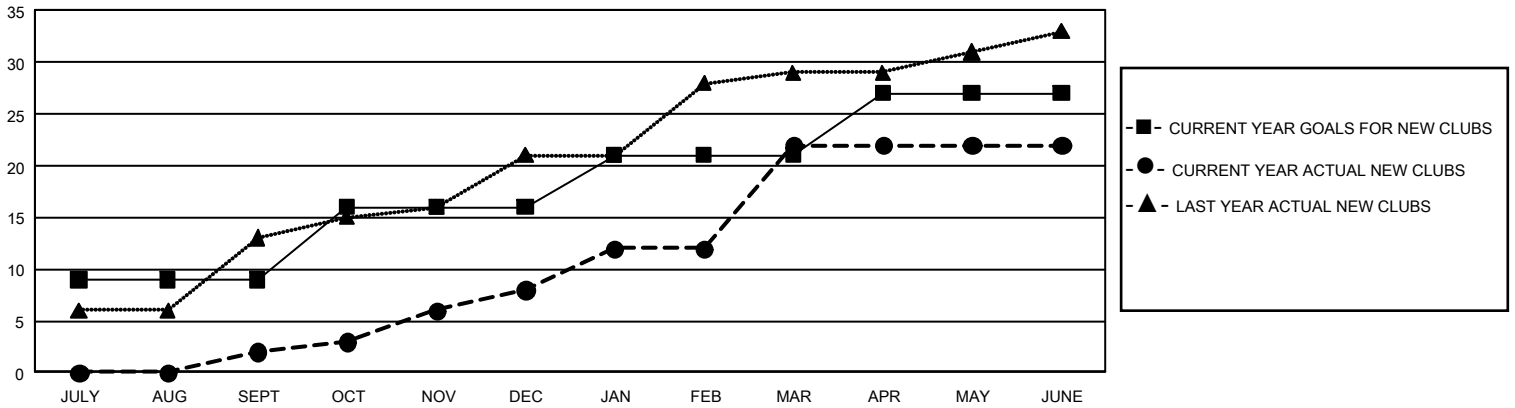
GMT Constitutional Area 6, Group F

GMT: OPEN

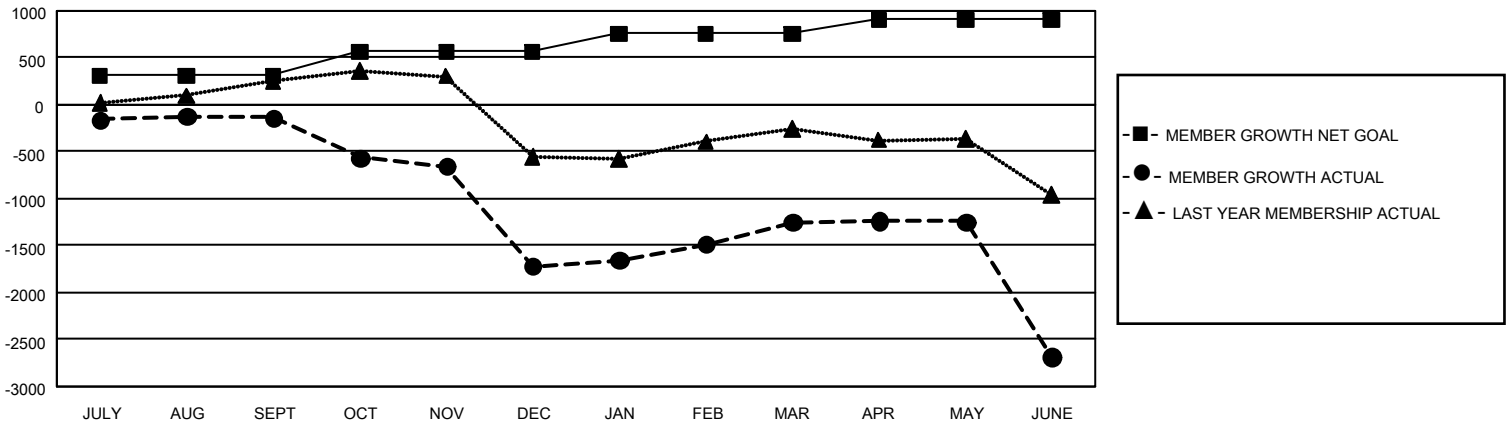
REPORT DOES NOT INCLUDE CLUBS IN UNDISTRICTED AREAS.

Clubs				Members			
RESULTS FOR 2019-2020				RESULTS FOR 2019-2020			
QUARTER	NEW CLUB GOAL	NEW CLUBS	DROPPED CLUBS	QUARTER	MEMBER GROWTH NET GOAL	MEMBER GROWTH ACTUAL	DROPPED MEMBERS ACTUAL (including transfers)
JULY/AUG/SEPT	27	2	5	JULY/AUG/SEPT	930	521	566
OCT/NOV/DEC	21	6	23	OCT/NOV/DEC	765	368	1,914
JAN/FEB/MAR	15	14	4	JAN/FEB/MAR	585	693	134
APR/MAY/JUNE	18	0	5	APR/MAY/JUNE	450	369	1,755

GOALS AND ACTUAL NEW CLUBS CUMULATIVE



GOALS AND ACTUAL MEMBERS CUMULATIVE



DROPPED CLUBS: 34	206 CLUBS OF 439 ADDED 1 OR MORE NEW MEMBERS	<u>GENDER DISTRIBUTION</u> MALE 10,274 (81.58%) FEMALE 2,320 (18.42%)
<u>DROPPED MEMBERS</u> DECEASED 50 CLUB CANCELLED 1,241 OTHER 3,078 <hr/> TOTAL 4,369	CLICK HERE FOR CUMULATIVE MEMBERSHIP DATA	TOTAL FAMILY UNIT MEMBERS 3,659 FAMILY MEMBERS PAYING HALF DUES 2,231